

2021 VIRTUAL RESEARCH RECRUITMENT FAIR

JAN.29.2021

Want to do research?

We will have **20 labs** in a variety of disciplines who are all looking for **YOU** to join them. Biology, medicine, public health — we've got you covered.





OVERVIEW



JAN.29.2021

Guide

Department:	Page #:
Bridgeside.....	2
Chemistry.....	2
Education.....	3
Engineering.....	3
Neuroscience.....	3
Psychology.....	4
Public Health.....	5-6
UPMC.....	6-8



MEET THE RESEARCHERS:

2

Bridgeside

Dr. Joanne Flynne, PhD

Department of Immunology

Research: This lab seeks to define the immune mechanisms that enhance resistance to tuberculosis infection. This lab uses animal models to study T cell, macrophage, dendritic cell, cytokine, and chemokine responses to *Mycobacterium tuberculosis* in the lungs.

Dr. Amit Sethi, PhD

Department of Occupational Therapy

Research: This lab seeks to understand the neurophysiological and motor control mechanisms contributing to motor impairments in post-stroke adults. Their goal is to develop novel rehabilitation technologies to improve upper extremity movement in post-stroke adults.

Chemistry

Dr. Seth Childers

Department of Biological Chemistry

Research: The laboratory focuses on how to dynamically place molecules in specific, calculated locations in the cell in order to affect cellular pathways and optimize cellular function.



MEET THE RESEARCHERS:

Education

Dr. Benjamin Rottman, PhD

Department of Psychology

Research: This lab's primary research focus is causal learning - how people learn cause-effect relationships from their experiences (e.g., this new medicine I have been trying seems to work well).

Engineering

Dr. Partha Roy, PhD

McGowan Institute for Regenerative Medicine

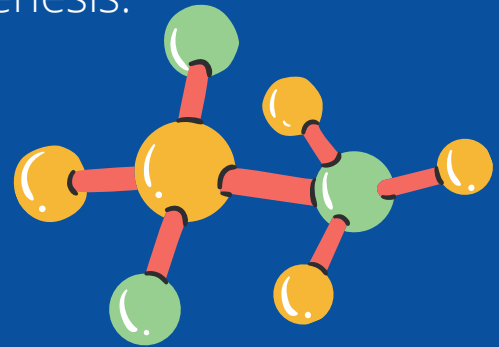
Research: The focus of this lab's research is investigating the role of actin-binding proteins in cell migration and other actin-dependent processes in the pathophysiology of tumorigenesis.

Neuroscience

Dr. Judy Cameron, PhD

Department of Psychiatry

Research: The lab's research focuses on the impact of various everyday life stresses, both metabolic and psychosocial, on long-term health and brain function. Areas of interest include the effects of physical activity on brain processes and the genetic factors and early life experiences that lead to anxious and depressive behaviors in adulthood.



MEET THE RESEARCHERS:

4

Psychology

Dr. Melissa Libertus, PhD

Learning Research and Development Center
Research: This lab focuses on how complex mathematical thinking builds upon earlier number concepts and the mechanisms that shape this development. The goal of their work is to further our theoretical understanding of early mathematical cognition in order to improve children's math abilities and ultimately increase students' prospects for academic success in the STEM disciplines.



Dr. Jennifer Steel, PhD

Department of Psychology

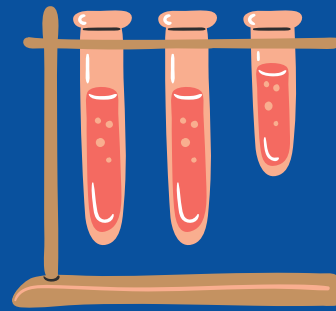
Research: Current studies involve helping patients with cancer or kidney disease cope with their symptoms through cognitive behavioral therapy and other resources. The lab is also investigating the outcomes of kidney and liver living donors post-surgery.

MEET THE RESEARCHERS:

Public Health

Dr. Moses Bility, PhD

Department of Infectious Diseases and Microbiology
Research: This lab investigates the role of macrophages in human infectious diseases and microbiome dysbiosis-associated inflammatory diseases.



Dr. Ying Ding, PhD

Department of Biostatistics
Research: This lab focuses on proteomic experiment design, network analysis for psychiatric disorders, and progression analysis of AMD (Age-related Macular Degeneration).

Dr. Mackey Friedman, PhD, MPH

Department of Infectious Diseases and Microbiology
Research: This lab focuses on health disparities among bisexual males; stigma and comorbidities among aging gay and bisexual men; the evaluation of social marketing campaigns intended to reduce stigma; and the correlates of poor viral suppression in people living with HIV/AIDS.

MEET THE RESEARCHERS:

Public Health (cont.)

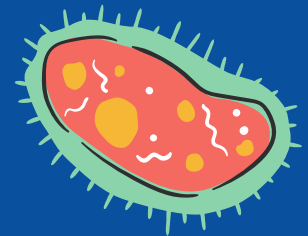
Dr. Yuanyu Peter Di, PhD, MBA

Department of Environmental and Occupational Health Research: This lab investigates the effects of infection and immunity on the lung and its associated pathophysiological response during injury, repair, and regeneration.

UPMC

Dr. Cecilia Lo, PhD

Department of Developmental Biology
Research: The lab is focused on investigating the developmental and genetic etiology of congenital heart disease.



Dr. Cristian Apetrei, MD, PhD

Department of Infectious Diseases
Research: This lab investigates the role of gut dysfunction in the pathogenesis of HIV infection and seeks to elaborate strategies to counter it in nonhuman primate hosts.

Dr. Cynthia St. Hilaire, PhD, FAHA

Vascular Medicine Institute
Research: The primary research in this lab focuses on characterizing the underlying pathobiology of vascular disease, concentrating on mechanisms that drive vascular and valvular calcification and remodeling.

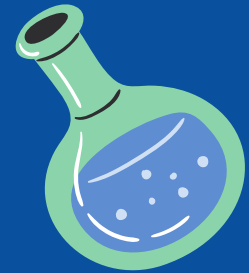
MEET THE RESEARCHERS:

UPMC (cont.)

Dr. Ivona Vasile-Pandrea, MD, PhD

Department of Pathology

Research: This lab seeks to understand how the African non-human primates are able to maintain normal levels of immune activation during SIV infection with the long-term goal of identifying novel immunotherapeutic strategies for combatting the progression of AIDS.



Dr. Melanie Scott, MD, PhD

Pittsburgh Trauma Research Center

Research: This lab focuses on the role of the inflammasome and inflammatory caspases on cell death and survival pathways during surgery and trauma. This work centers on the elucidation of novel pathways of inflammasome activation and how mitochondria are central to these responses.

Dr. Patrick Pagano, PhD, FAHA

Vascular Medicine Institute

Research: This lab focuses on the role of reactive oxygen species in the modulation of vascular tone, remodeling, and inflammation. They seek to elucidate the mechanisms behind effector pathways that contribute to pulmonary hypertension, heart failure, atherosclerosis, and hyperproliferative disorders.

MEET THE RESEARCHERS:

UPMC (cont.)

Dr. Wendy M. Mars, PhD

Department of Pathology

Research: This lab investigates the role of hepatocyte growth factor (HGF) and the plasminogen activator system in tissue regeneration.

Dr. Ruya Liu, MD, PhD

Department of Medicine, Endocrinology, and Metabolism

Research: This lab focuses on the role of the HIPPO transcriptional pathway in maintaining normal cardiac function as well as the proliferation of pancreatic beta-cell maturation with the long term goal of identifying therapeutic targets for modulating metabolism.

